

T W I L G H T

Studio Twilight / Architectural Lighting Design

Studio Twilight | Berlin

Studio Twilight is an award winning architectural lighting design studio operating internationally and headquartered in Berlin, Germany.

Founded in 2006, we design creative lighting solutions for projects of all sizes and to numerous market sectors. We are renowned for our unique approach and our unwavering commitment to design, innovation and sustainability.

Architectural lighting is more than just a visual effect. Light is the very definition of space, realizing the potential of its environment.

Light delivers a depth of experience and emotion that is both exquisite and profound.

Studio Twilight is focused on enhancing the human experience through designs that are aesthetically inspiring and pragmatically sustainable, ingeniously modern and poetically tied to nature.

Our approach is curious, collaborative and professional.

We believe the most extraordinary outcomes stem from open communication between all stakeholders.

Every project is a discovery process designed to meet unique needs and conditions.

Our success driven by the power of questions and the collective expertise of designers who strive to continually advance their technical knowledge in a complex and fast changing industry.

www.studiotwilight.com

TWILIGHT
ILIGHT

Studio Twilight / Architectural Lighting Design

Restaurant & Bar
Design Awards



Studio Twilight | How We Work?

The guiding principle that leads us is a constant dialog between the artificial lighting and the people in the space designed, within the context of structure, architecture and interior design, which is ever changing according to the project. We design lighting schemes for a wide range of applications including residential, commercial, public and industrial projects. Each project is approached in several stages:

Concept: design ideas and philosophy accompanied by lighting sketches and presentations.

Preliminary scheme design: detailed translation of the concept stage, preliminary lighting-design layout, preliminary indication of type of luminaries and lamps.

Design development and tender documentation: Bill of quantities, preparation of full equipment specifications with details of luminaries dimensions, lamp data and relevant photometric information (photometric calculations according to requirements), proposal plan, on-site testing and mock-ups to be constructed as necessary.

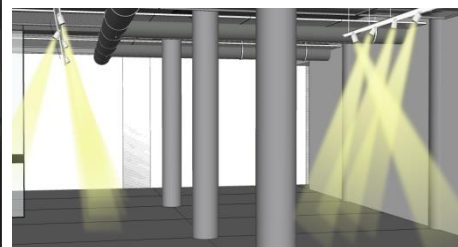
Implementation documentation: detailed implementation documentation, installation details, final lighting adjustments, supervision (starting from design development and tender documentation stage).

We are here to shed light into your project, giving a professional, creative and service oriented process.

TWILIGHT
LIGHT

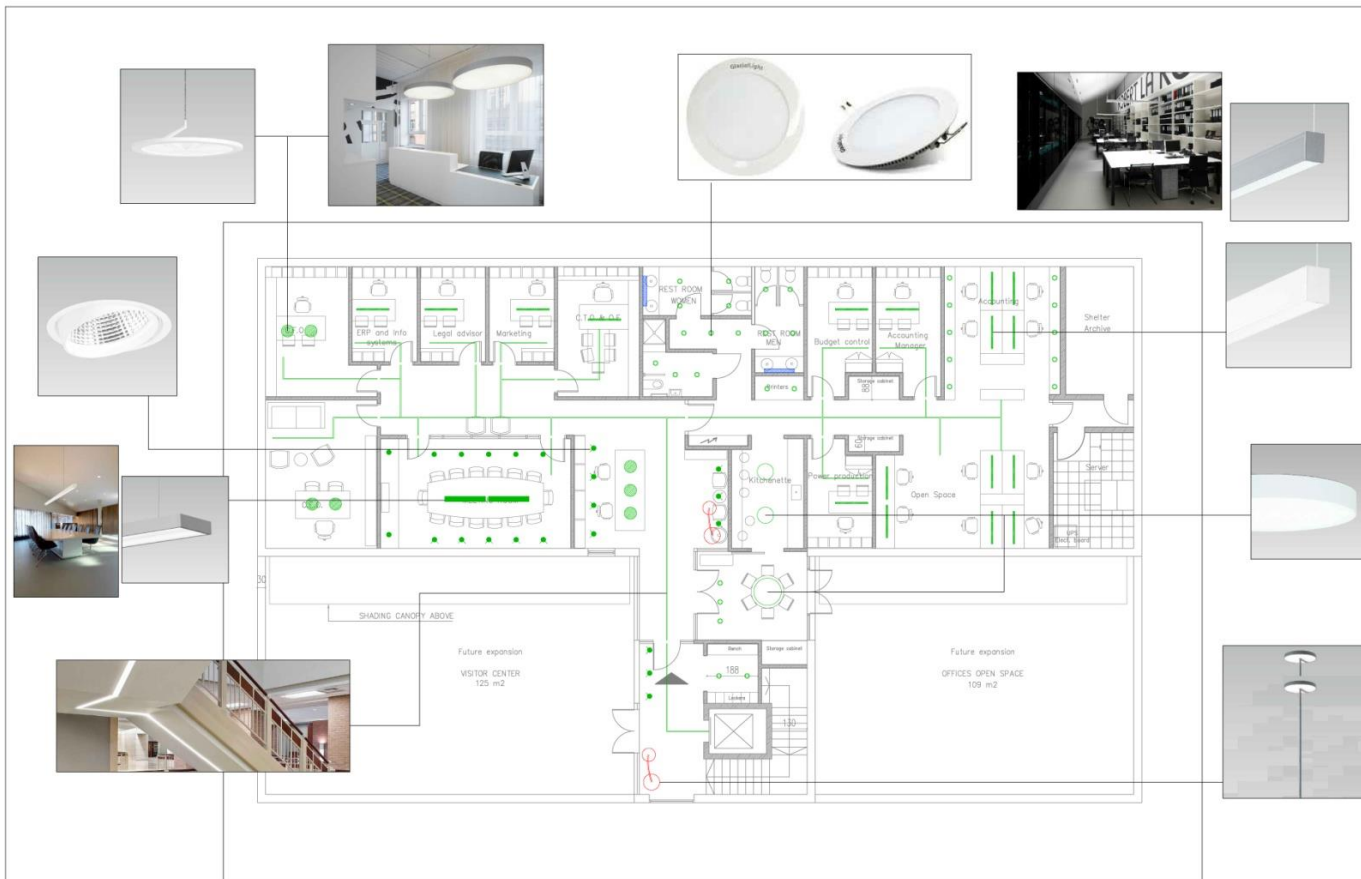
Studio Twilight / Architectural Lighting Design

How We Work? | CONCEPT



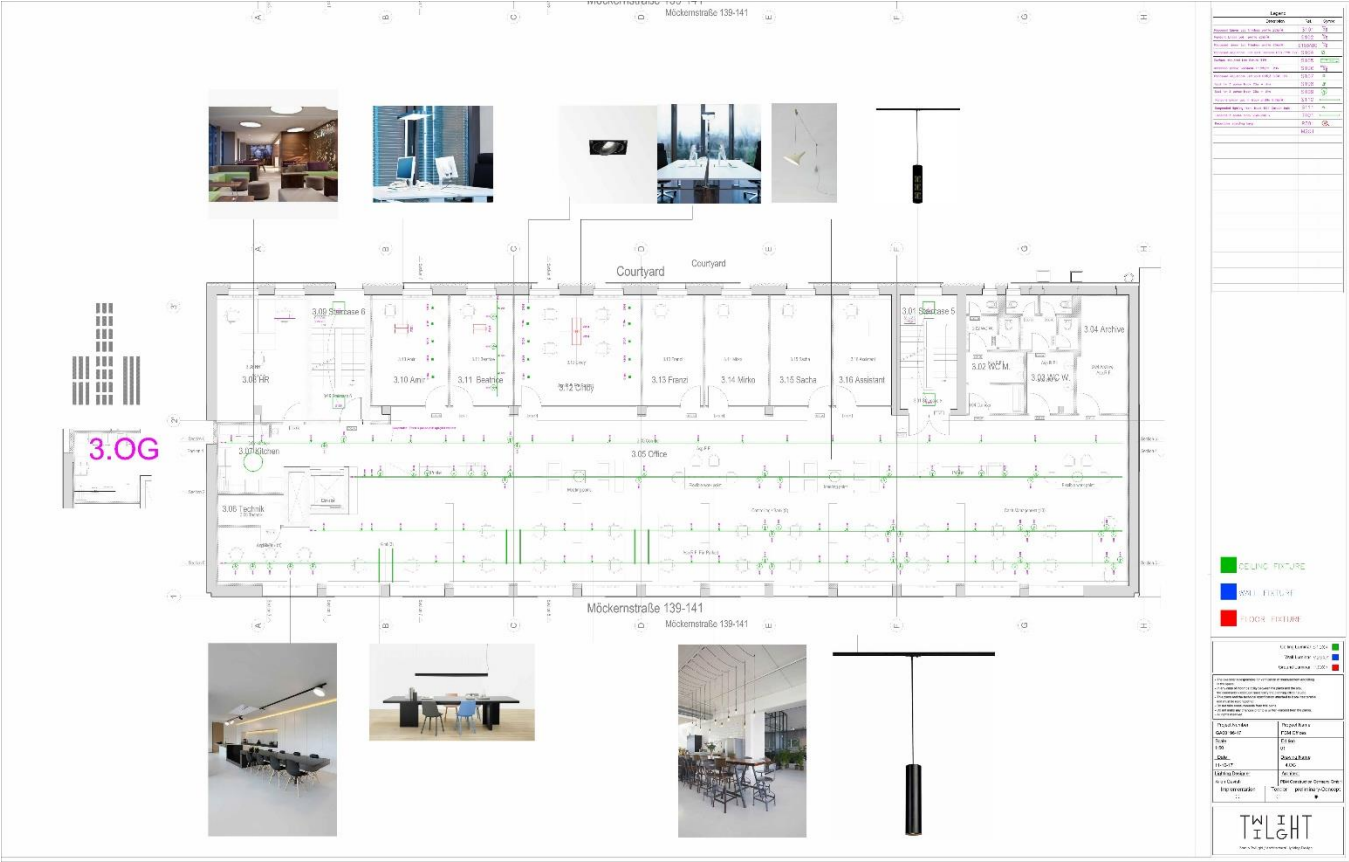
CONCEPT | PRELIMINARY | TENDER | CONSTRUCTION

How We Work? | CONCEPT



CONCEPT | PRELIMINARY | TENDER | CONSTRUCTION

How We Work? | PRELIMINARY



CONCEPT | PRELIMINARY | TENDER | CONSTRUCTION



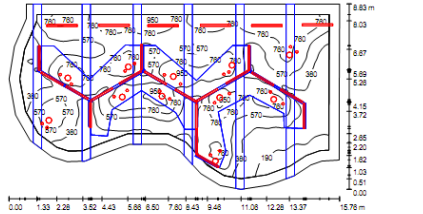
PBM Offices | Berlin

How We Work? | TENDER - Lighting Calculations

תוכנית אור

Operator: Twilight Group
 Telephone: +972 3 8184015
 Fax: +972 3 8184016
 e-mail: twlight@twlightgroup.com

אזור עבודה / Summary



Height of Room: 2.200 m, Maintenance factor: 0.80 Values in Lux, Scale 1:114

Surface	ρ [%]	E_{sp} [lx]	E_{max} [lx]	uD
Workplane	/	591	138	1057 0.23
Floor	20	321	28	711 0.09
Ceiling	70	489	41	3937 0.08
Walls (23)	80	321	96	1353

Workplane:
 Height: 0.750 m
 Grid: 128 x 128 Points
 Boundary Zone: 0.500 m
 Illuminance Quotient (according to LG7): Walls / Working Plane: 0.582, Ceiling / Working Plane: 0.827.

Luminaire Parts List

No.	Pieces	Designation (Correction Factor)	ϕ [m]	P [W]
1	11	Concord 2028017 LED100TE DECO OPEN CONE 42W = LED100TE DECO OPAL IP44 42W (1.000)	3200	46.0
2	22	Concord 2037234 Myriad 4 Compact (1.000)	1200	19.0
3	6	www.dvic.it INF ALA 80M17E 07 PLAF. SPAZIO IND. 1x35W (1.000)	6650	80.0
4	18	www.dvic.it INF DUP 54B 05 APP.SIMMETRICO 2x21W G5 FD (1.000)	10000	108.0
Total:			281500	3348.0

Specific connected load: 28.81 W/m² = 4.87 W/m²100 lx (Ground area: 116.20 m²)

תוכנית אור

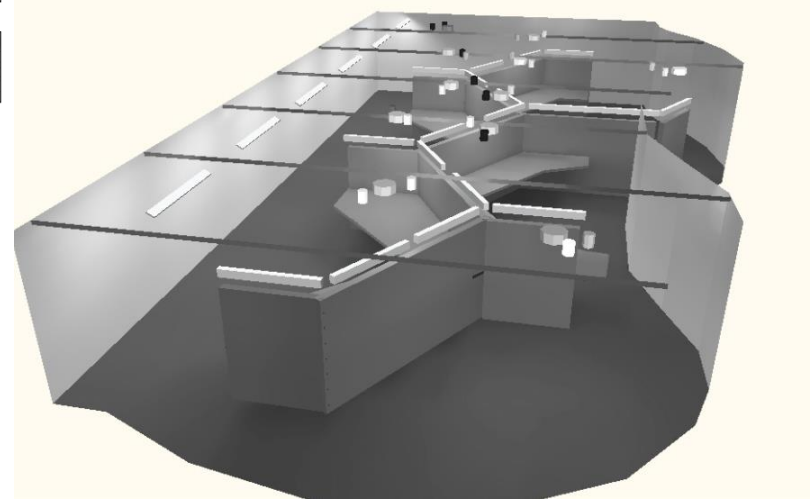
Operator: Twilight Group
 Telephone: +972 3 8184015
 Fax: +972 3 8184016
 e-mail: twlight@twlightgroup.com

אזור עבודה / Luminaire parts list

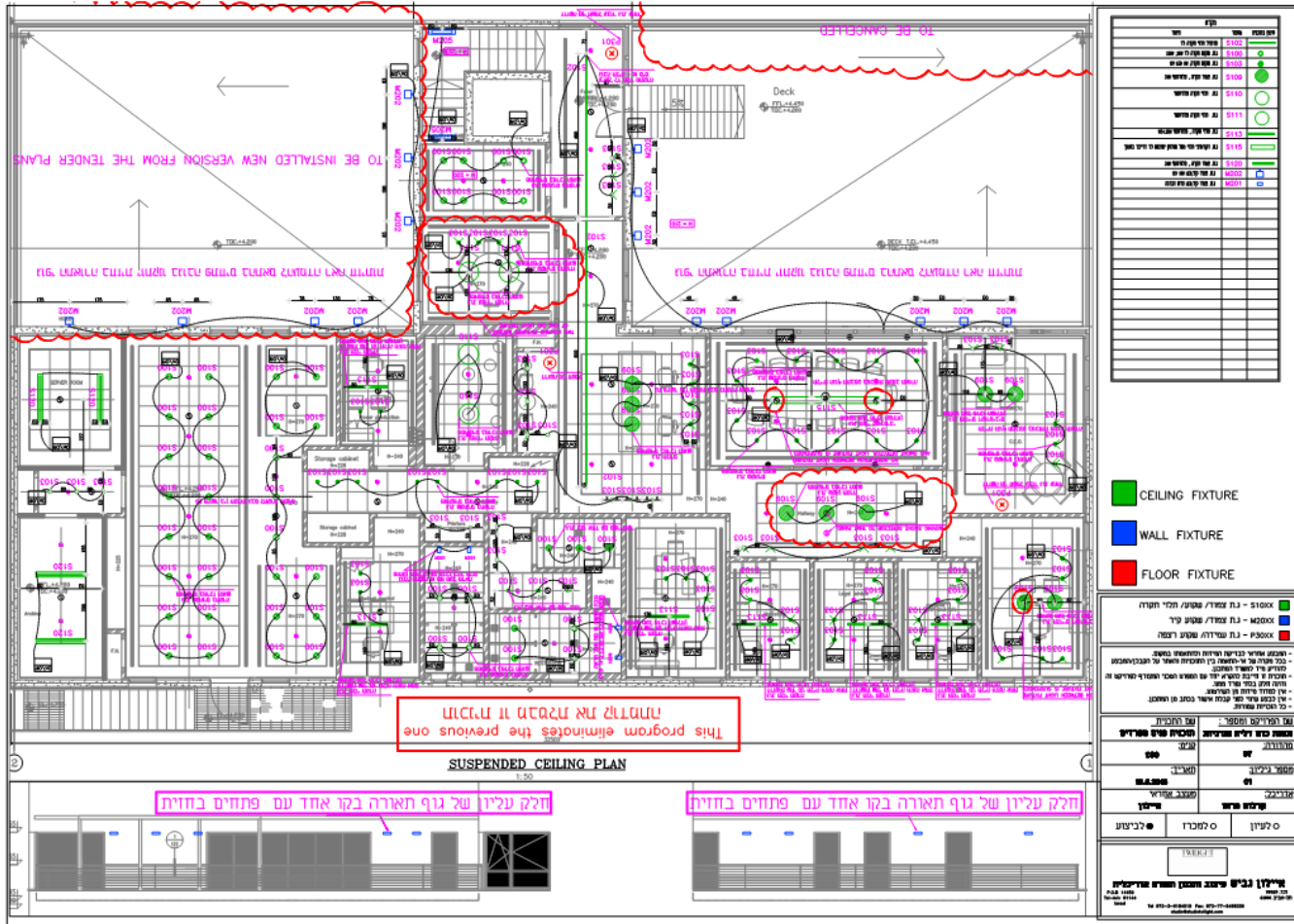
- 11 Pieces Concord 2028017 LED100TE DECO OPEN CONE 42W = LED100TE DECO OPAL IP44 42W
 Article No.: 2028017
 Luminaire Luminous Flux: 3200 lm
 Luminaire Wattage: 46.0 W
 Luminaire classification according to CIE: 100
 CIE flux code: 51 83 87 100 82
 Filing: 1 x 42W TC-T-EL (Correction Factor 1.000)
- 22 Pieces Concord 2037234 Myriad 4 Compact
 Article No.: 2037234
 Luminaire Luminous Flux: 1200 lm
 Luminaire Wattage: 19.0 W
 Luminaire classification according to CIE: 100
 CIE flux code: 59 83 100 99 80
 Filing: 1 x 19W TC-T-EL (Correction Factor 1.000)
- 6 Pieces www.dvic.it INF ALA 80M17E 07 PLAF. SPAZIO IND. 1x35W
 Article No.: ALA 80M17E 07
 Luminaire Luminous Flux: 6650 lm
 Luminaire Wattage: 80.0 W
 Luminaire classification according to CIE: 0
 CIE flux code: 00 00 00 75
 Filing: 1 x User defined (Correction Factor 1.000)
- 18 Pieces www.dvic.it INF DUP 54B 05 APP.SIMMETRICO 2x21W G5 FD
 Article No.: DUP 54B 05
 Luminaire Luminous Flux: 10000 lm
 Luminaire Wattage: 108.0 W
 Luminaire classification according to CIE: 100
 CIE flux code: 51 82 87 100 43
 Filing: 2 x User defined (Correction Factor 1.000)

See our luminaire catalog for an image of the luminaire.

See our luminaire catalog for an image of the luminaire.

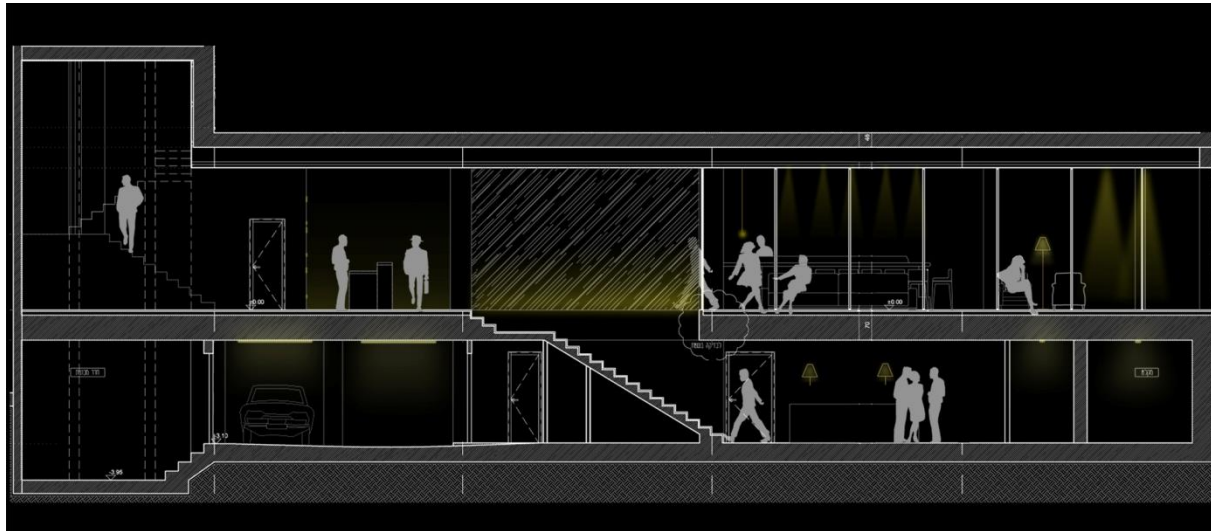
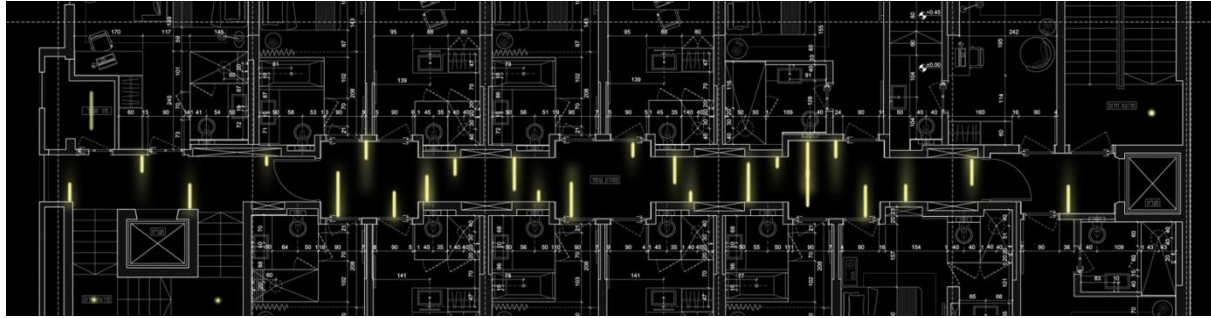


How We Work? | Implementation



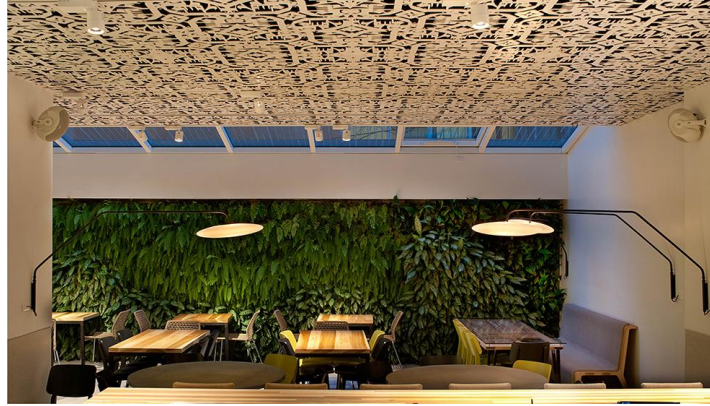
Selected Projects | Hospitality

Mendeli Street Hotel | Tel Aviv





Mendeli Street Hotel | Tel Aviv

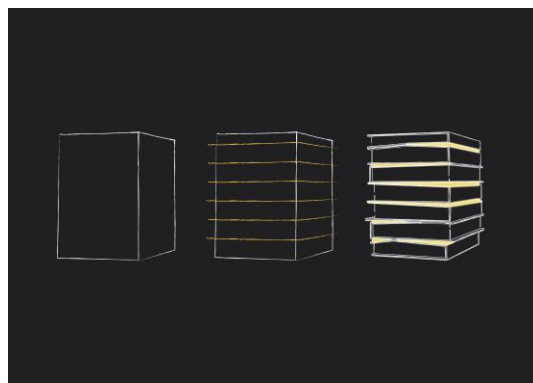
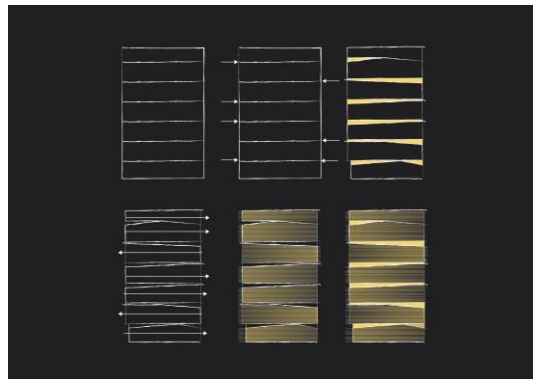






DEFINE Hotel | Tel Aviv

work in progress

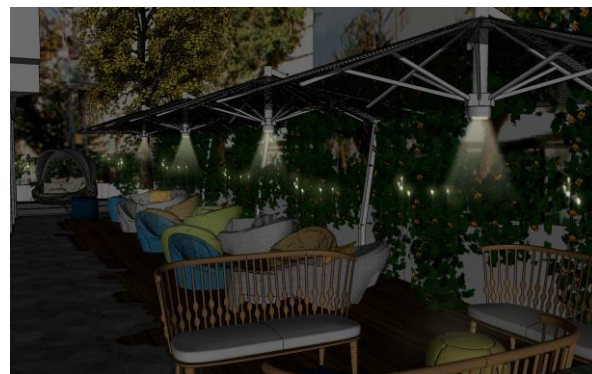
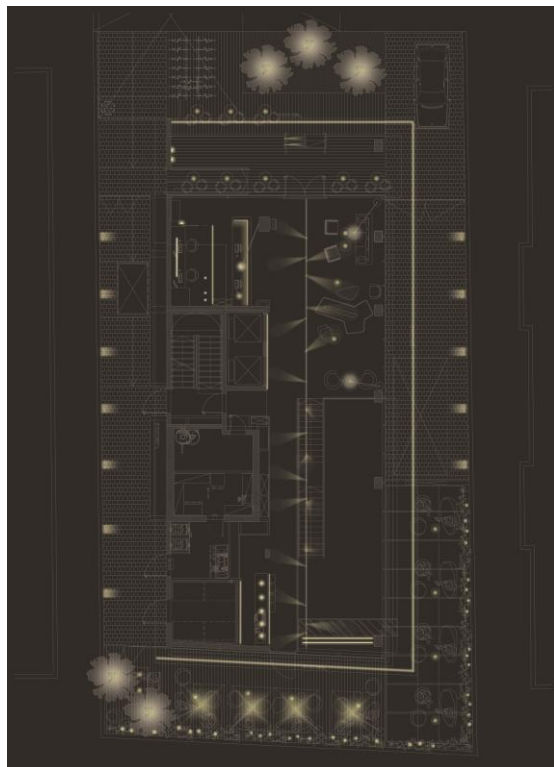


TWILIGHT
TILIGHT

Studio Twilight / Architectural Lighting Design

DEFINE Hotel | Tel Aviv

work in progress



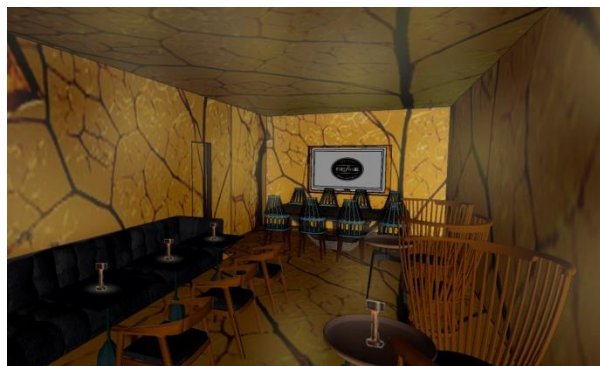
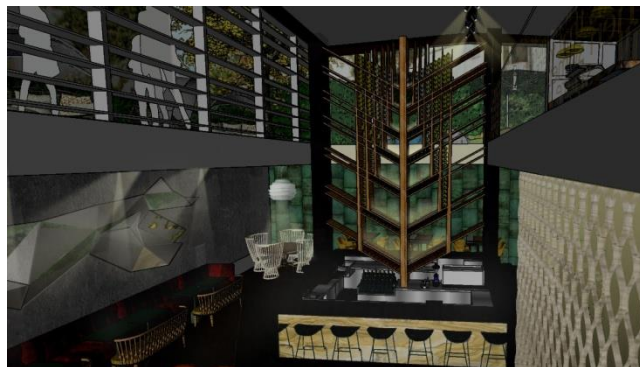
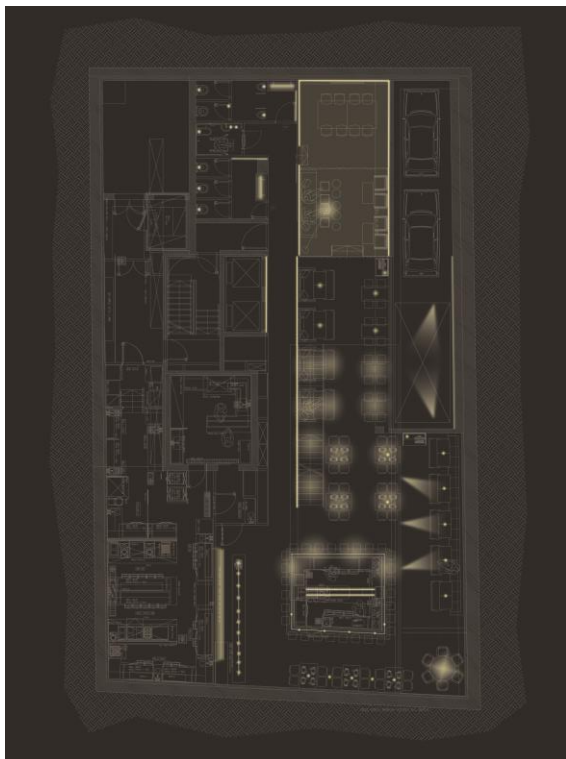
TWILIGHT
I L I G H T

Studio Twilight / Architectural Lighting Design

HOTELS | RESTAURANTS | RESIDENTIAL | INDUSTRIAL | PUBLIC

DEFINE Hotel | Tel Aviv

work in progress



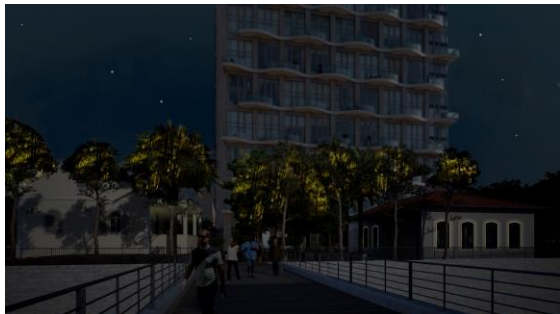
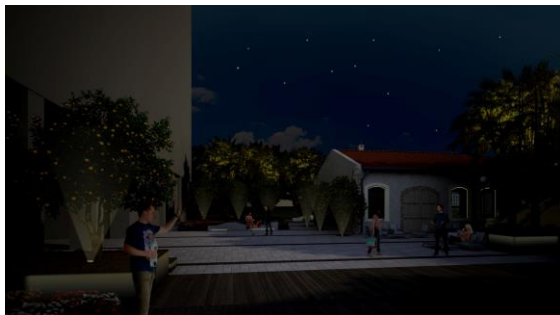
TWILIGHT

Studio Twilight / Architectural Lighting Design

HOTELS | RESTAURANTS | RESIDENTIAL | INDUSTRIAL | PUBLIC

GUTMAN Boutique Hotel Landscape | Tel Aviv

work in progress



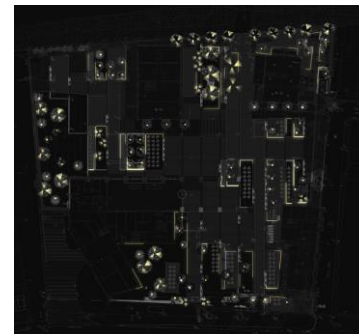
HOTELS | RESTAURANTS | RESIDENTIAL | INDUSTRIAL | PUBLIC

TWILIGHT
I L G H T

Studio Twilight / Architectural Lighting Design

GUTMAN Boutique Hotel Landscape | Tel Aviv

work in progress

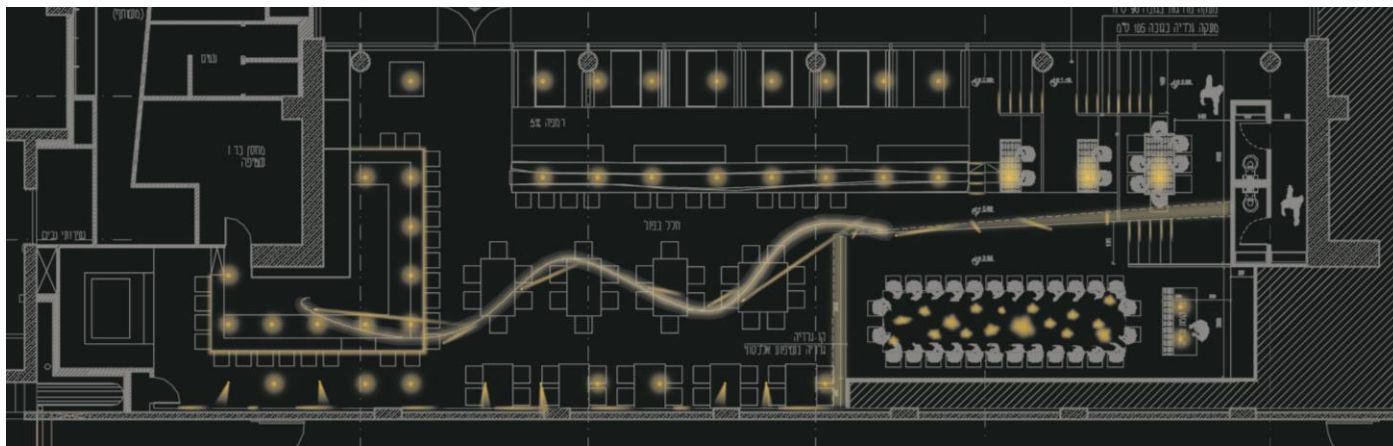
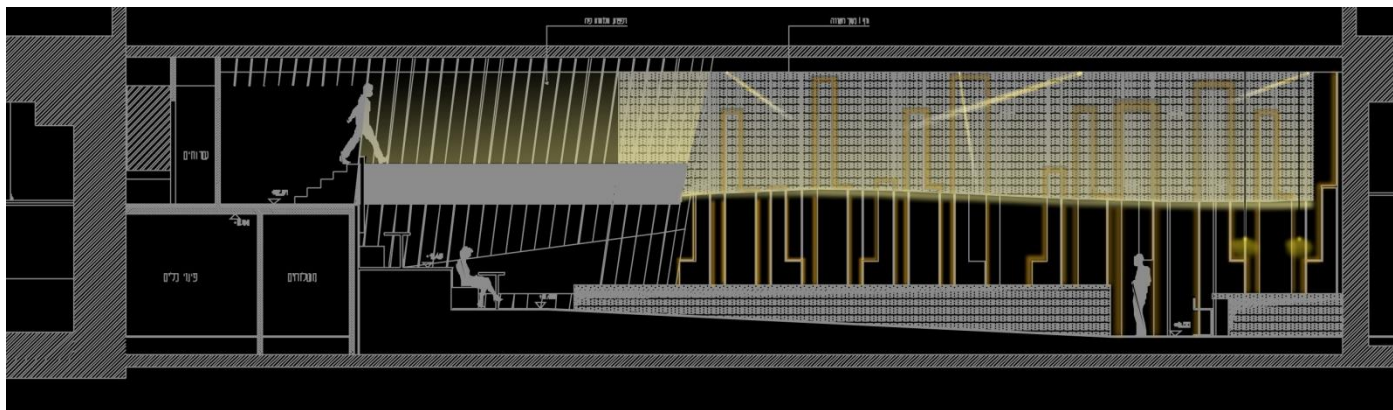


TWILIGHT
I L G H T

Studio Twilight / Architectural Lighting Design

HOTELS | RESTAURANTS | RESIDENTIAL | INDUSTRIAL | PUBLIC

TOPOLOPOMPO | Tel Aviv Restaurant & Bar Design Awards



TWILIGHT

Studio Twilight / Architectural Lighting Design

HOTELS | RESTAURANTS | RESIDENTIAL | INDUSTRIAL | PUBLIC

TOPOLOPOMPO | Tel Aviv Restaurant & Bar Design Awards



HOTELS | RESTAURANTS | RESIDENTIAL | INDUSTRIAL | PUBLIC

TWILIGHT
ILIGHT

Studio Twilight / Architectural Lighting Design

TOPOLOPOMPO | Tel Aviv Restaurant & Bar Design Awards



HOTELS | RESTAURANTS | RESIDENTIAL | INDUSTRIAL | PUBLIC

Studio Twilight

**Architectural Lighting Design Studio
Product Research & Development**

Member of IALD

HermannStr.232
12049 Berlin Germany

Ailon: M+49.(0)157.735.45303
Na'ama: M+49.(0)157.741.61519